




# TECHNICAL DATA SHEET

## Steplite EasyGrip O4 black/black

### General information

Size range	
• EU	36 - 48
• UK	3.5 - 13
• US	4 - 15
The testresults in this technical datasheet are performed on size EU 42, UK 8, US 9.	
Weight / pair	
• Safety level: Non-safety	± 45.93 oz
Colors	
	
black - black	

### Upper

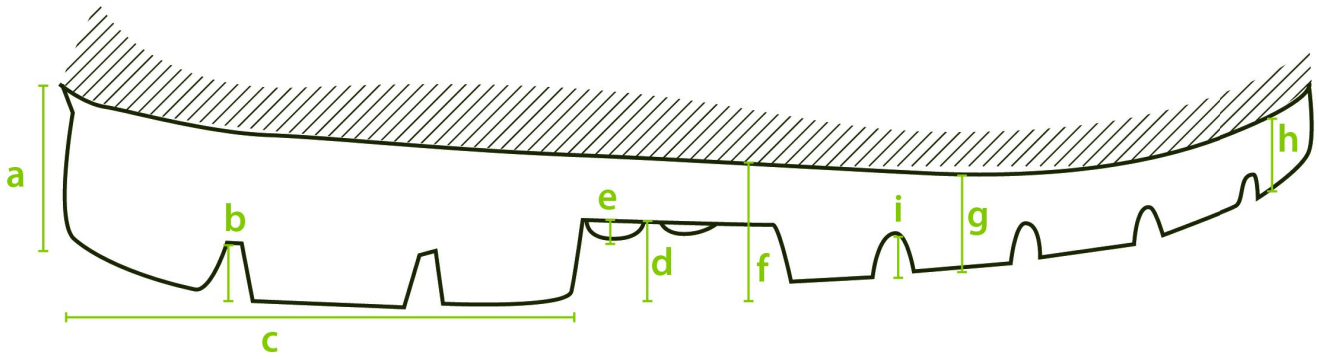
A. Dimensions	
• Height	outer measure: 15.0 in
	cutting edge: 12.2 in
• Foot length	outer measure: 12.0 in
	inner measure: 11.0 in
B. Thickness	
• Upper edge	0.11 - 0.13 in
• Calf	0.11 - 0.12 in
• Shinbone	0.11 - 0.11 in
• Ankle	0.14 - 0.15 in
• Heel	0.15 - 0.21 in
C. Raw material	
	NEOTANE (proprietary polyurethane compound)

<b>D. Density</b>		
	86.8 - 93.5 oz/gallon	
<b>E. Tensile strength</b>		
(incl. lining)	1450 ± 290 psi	
<b>F. Elongation</b>		
(incl. lining)	600 +/- 100%	
<b>G. Hardness</b>		
	43 +/- 2 Sh A	
<b>H. Tear strength</b>		
(incl. lining) lbf/in	57.1 ± 11.4 lb/in	
<b>I. Aging</b>		
(incl. lining)	<b>7 days at 158 °F</b>	<b>14 days at 158 °F</b>
• Tensile strength	1682.4 psi	1305.3 psi
• Elongation	580 ± 20%	600 ± 20%
• Tear strength	65.1 lb/in	51.4 lb/in
<b>J. Chemical resistance</b>		
	<a href="#">see detailed list</a>	
<b>K. Environmental temperature</b>		
• Maximum	± 212 °F	
• Minimum	Cold insulation down to -4 °F	

## Lining

<b>A. Material</b>	
	PU coating on polyester fabric
<b>B. Seams</b>	
	Knitted seams

## Outsole profile



### A. Dimensions

• Heel		
• Thickness	(a)	1.3 in
• Profile depth	(b)	0.34 in
• Length	(c)	3.6 in
• Width		3.2 in
• Middle foot		
• Height	(d)	0.47 in
• Ladder anti-slip grips	(e)	0.08 in
• Outsole		
• Thickness	(f)	0.92 in
	(g)	0.79 in
	(h)	0.70 in
• Profile depth	(i)	0.26 in

### B. Raw material

NEOTANE (proprietary polyurethane compound)

### C. Density

6.5 - 7.0 ppg (imp.)

### D. Mechanical characteristics

See upper (E)-(F)-(H)

### E. Energy absorption of the seat region

25-35 J (requirement  $\geq 20$  J)


### F. Antistatic

dry:  $1 \times 10^8$  -  $1 \times 10^9$  Ohm

wet:  $1 \times 10^7$  -  $1 \times 10^9$  Ohm

<b>G. Abrasion resistance</b>	
	0.0031 in <sup>3</sup>
<b>H. Hardness</b>	
	60 +/- 10 Sh A
<b>I. Footwear slip resistance</b>	
	SRC
<b>J. Chemical resistance</b>	
	<a href="#">see detailed list</a>

## Accessories

<b>Insole</b>		
Three layers		
• Toplayer	woven textile	
• Color	green	
• Thickness	0.03 in	
• Interlayer	needle felt	
• Color	cyan blue	
• Thickness	0.12 in	
• Bottom	gel latex	
• Color	black	
• Thickness	0.04 in	
<b>Washable at 86 °F</b>		