




TECHNICAL DATA SHEET

Steplite EasyGrip S4 black/black

General information

Size range	
• EU	36 - 48
• UK	3.5 - 13
• US	4 - 15
The testresults in this technical datasheet are performed on size EU 42, UK 8, US 9.	
Weight / pair	
• Safety level: Steel toe cap	± 52.56 oz
Colors	
	
black - black	

Upper

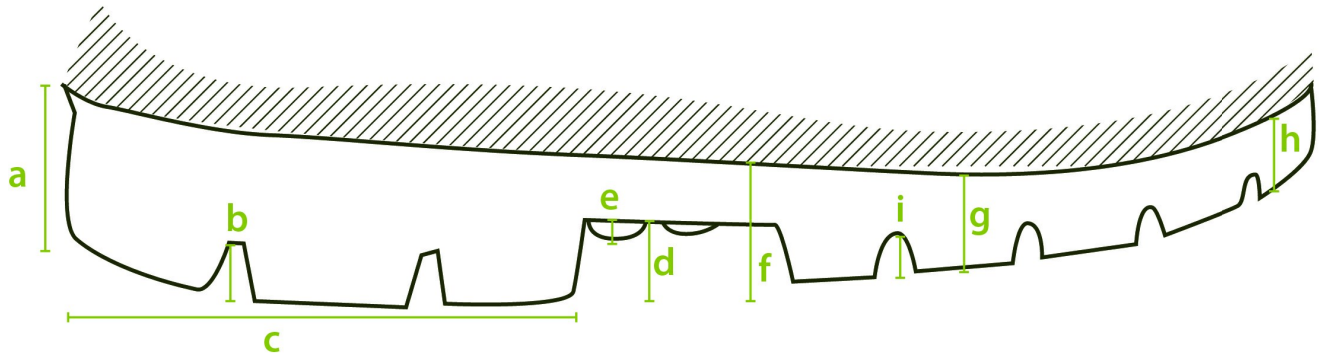
A. Dimensions	
• Height	outer measure: 15.0 in
	cutting edge: 12.2 in
• Foot length	outer measure: 12.0 in
	inner measure: 11.0 in
B. Thickness	
• Upper edge	0.11 - 0.13 in
• Calf	0.11 - 0.12 in
• Shinbone	0.11 - 0.11 in
• Ankle	0.14 - 0.15 in
• Heel	0.15 - 0.21 in
C. Raw material	
	NEOTANE (proprietary polyurethane compound)
D. Density	
	86.8 - 93.5 oz/gal (U.S.)

E. Tensile strength		
(incl. lining)	1450 ± 290 psi	
F. Elongation		
(incl. lining)	600 +/- 100%	
G. Hardness		
	43 +/- 2 Sh A	
H. Tear strength		
(incl. lining) lbf/in	57.1 ± 11.4 lbf/in	
I. Aging		
(incl. lining)	7 days at 158 °F	14 days at 158 °F
• Tensile strength	1682.4 psi	1305.3 psi
• Elongation	580 ± 20%	600 ± 20%
• Tear strength	65.1 lbf/in	51.4 lbf/in
J. Chemical resistance		
	see detailed list	
K. Environmental temperature		
• Maximum	± 212 °F	
• Minimum	Cold insulation down to -4 °F	

Lining

A. Material	
	PU coating on polyester fabric
B. Seams	
	Knitted seams

Outsole profile



A. Dimensions

• Heel		
• Thickness	(a)	1.3 in
• Profile depth	(b)	0.34 in
• Length	(c)	3.6 in
• Width		3.2 in
• Middle foot		
• Height	(d)	0.47 in
• Ladder anti-slip grips	(e)	0.08 in
• Outsole		
• Thickness	(f)	0.92 in
	(g)	0.79 in
	(h)	0.70 in
• Profile depth	(i)	0.26 in

B. Raw material

NEOTANE (proprietary polyurethane compound)

C. Density

6.5 - 7.0 ppg (imp.)

D. Mechanical characteristics

See upper (E)-(F)-(H)

E. Energy absorption of the seat region

25-35 J (requirement ≥ 20 J)

F. Antistatic

dry: $1 \times 10^8 - 1 \times 10^9$ Ohm

wet: $1 \times 10^7 - 1 \times 10^9$ Ohm

G. Abrasion resistance


0.0031 in³

H. Hardness	
	60 +/- 10 Sh A
I. Footwear slip resistance	
	SR
J. Chemical resistance	
	see detailed list

Safety

	Standard	Required	Type	Result
Toe cap				
Impact resistance (125J))	CSA Z195-14	> 0.50 in	Metallic	0.52 in
Impact resistance at -0.4 °F (125J)	CSA Z195-14	> 0.50 in	Metallic	0.68 in
Compression resistance	ASTM F2413-24	> 0.50 in	Metallic	0.96 in
Width of toe cap	outer measure: 1.7 in			
Height of toe cap	outer measure: 3.4 in			
Toe cap	Steel			

Certificates

	CSA Z195-14 70048629
	ASTM F2413-24 70048629

Accessories

Insole	
Three layers	
• Toplayer	woven textile
• Color	green
• Thickness	0.03 in
• Interlayer	needle felt
• Color	cyan blue
• Thickness	0.12 in
• Bottom	gel latex
• Color	black
• Thickness	0.04 in

Washable at 86 °F