




# TECHNICAL DATA SHEET

## Thermolite IceShield S5 EH green/black

### General information

Size range	
• EU	39 - 47
• UK	6 - 12
• US	6 - 14
The testresults in this technical datasheet are performed on size EU 42, UK 8, US 9.	
Weight / pair	
• Safety level: Non-metallic toe cap & midsole	± 100.18 oz
Colors	
	
green - black	

### Upper

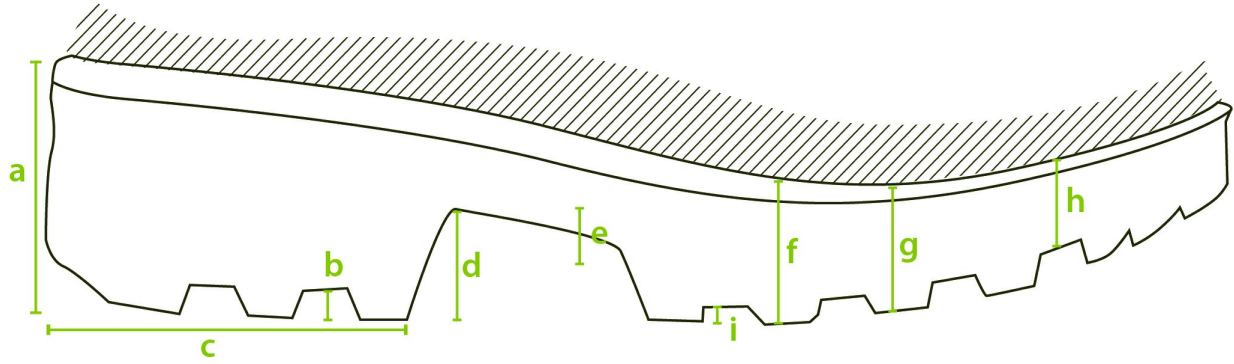
A. Dimensions	
• Height	outer measure: 15.7 in
• Foot length	outer measure: 12.2 in
	inner measure: 11.0 in
B. Thickness	
• Upper edge	0.18 in
• Calf	0.30 - 0.33 in
• Shinbone	0.24 - 0.35 in
• Ankle	0.46 in
• Heel	0.51 - 0.52 in
C. Raw material	
	NEOTANE (proprietary polyurethane compound)

<b>D. Density</b>		
	73.4 - 80.1 oz/gallon	
<b>E. Tensile strength</b>		
(incl. lining)	1450 ± 290 psi	
<b>F. Elongation</b>		
(incl. lining)	600 +/- 100%	
<b>G. Hardness</b>		
	43 +/- 2 Sh A	
<b>H. Tear strength</b>		
(incl. lining) lbf/in	57.1 ± 11.4 lb/in	
<b>I. Aging</b>		
(incl. lining)	<b>7 days at 158 °F</b>	<b>14 days at 158 °F</b>
• Tensile strength	1682.4 psi	1305.3 psi
• Elongation	580 ± 20%	600 ± 20%
• Tear strength	65.1 lb/in	51.4 lb/in
<b>J. Chemical resistance</b>		
	<a href="#">see detailed list</a>	
<b>K. Environmental temperature</b>		
• Maximum	± 212 °F	
• Minimum	Cold insulation down to -58 °F	

## Lining

<b>A. Material</b>	
	PU coating on polyester fabric
<b>B. Seams</b>	
	Welded and knitted seams

## Outsole profile



### A. Dimensions

#### • Heel

• Thickness	(a)	2.2 in
• Profile depth	(b)	0.39 in
• Length	(c)	3.9 in
• Width		3.9 in

#### • Middle foot

• Height	(d)	1.1 in
• Ladder anti-slip grips	(e)	0.07 in

#### • Outsole

• Thickness	(f)	1.2 in
	(g)	1.2 in
	(h)	0.71 in
• Profile depth	(i)	0.20 in

### B. Raw material

NEOTANE (proprietary polyurethane compound)

### C. Density

5.5 - 6.0 ppg (imp.)

### D. Mechanical characteristics

See upper (E)-(F)-(H)

### E. Energy absorption of the seat region

60-70 J (requirement  $\geq 20$  J)

### F. ESR / EH

< 1 mA

### G. Abrasion resistance



0.0031 in<sup>3</sup>

<b>H. Hardness</b>	
	60 +/- 10 Sh A
<b>I. Footwear slip resistance</b>	
	SRC
<b>J. Chemical resistance</b>	
	<a href="#">see detailed list</a>


## Safety

	Standard	Required	Type	Result
<b>Toe cap &amp; midsole</b>				
Impact resistance (125J)	CSA Z195-14	> 0.50 in	Non-metallic	0.75 in
Impact resistance at -0.4 °F (125J)	CSA Z195-14	> 0.50 in	Non-metallic	0.96 in
Compression resistance	ASTM F2413-18	> 0.50 in	Non-metallic	0.87 in
Width of toe cap	outer measure: 1.7 in			
Height of toe cap	outer measure: 3.3 in			
Toe cap	Composite material such as fiberglass			

## Certificates

	CSA Z195-14 70048629
	ASTM F2413-18 70048629

## Accessories

<b>Thermo-moulded footbed</b>		
Two layers		
• Toplayer	woven textile	
• Color	green	
• Thickness	0.03 in	
• Bottom	PU foam	
• Color	black	
• Thickness	0.12 - 0.28 in	
<b>Washable at 86 °F</b>		